

AIRPORT DIAGRAM

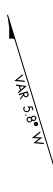
WRIGHT TOWER ★
 126.25 269.275
 GND CON
 121.7 273.575
 WRIGHT OPS
 38.7

81° 34' W

81° 33' W

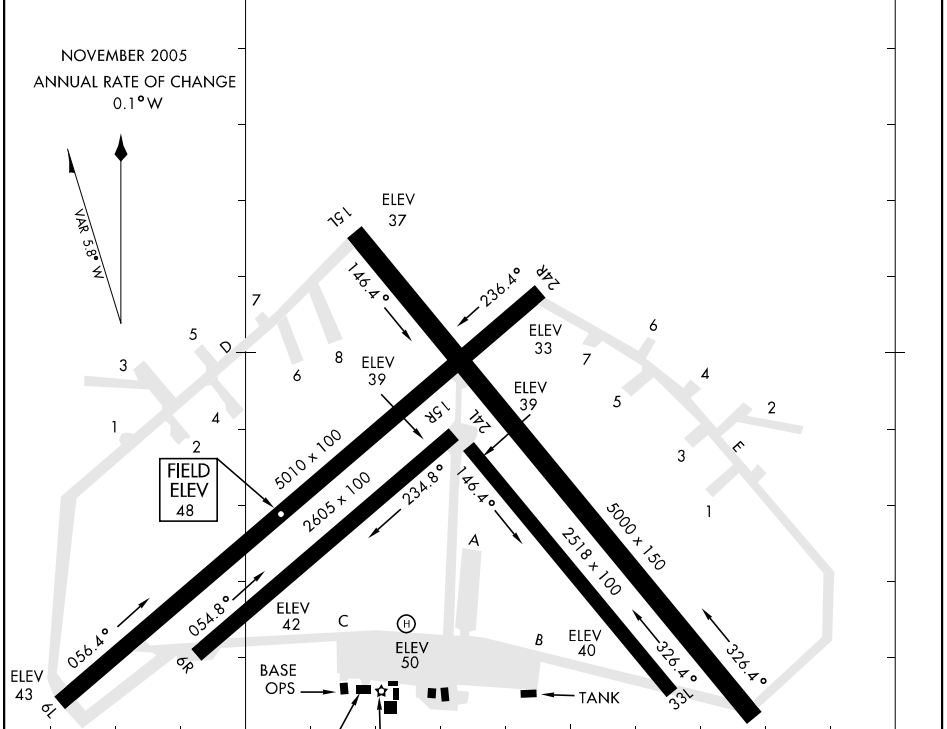
31° 54' N

NOVEMBER 2005
 ANNUAL RATE OF CHANGE
 0.1° W



SE-4, 30 AUG 2007 to 27 SEP 2007

SE-4, 30 AUG 2007 to 27 SEP 2007



OVERRUN 6R-24L 100x 100
 OVERRUN 15R-33L 100x 200

RWYS 15R-33L CLOSED TO F/W TKOF AND LDG.
 RWYS 6R-24L CLOSED TO F/W TKOF AND LDG.
 RWY 15L-33R
 PCN 11 F/A/W/T
 RWY 6L-24R
 PCN 21 F/A/W/T
 Rwy 15R-33L
 PCN 10 F/B/W/T
 RWY 6R-24L
 PCN 14 F/A/W/T

ELEV 33 31° 53' N

AIRPORT DIAGRAM