

07130

AIRPORT DIAGRAM

AL-887 (FAA)

KALISPELL/GLACIER PARK INTL (GPI)
KALISPELL, MONTANA

ATIS 132.625
GLACIER TOWER*
124.55
GND CON
121.6

RWY 2-20
S80, D170, ST175, DT250
RWY 12-30
S12

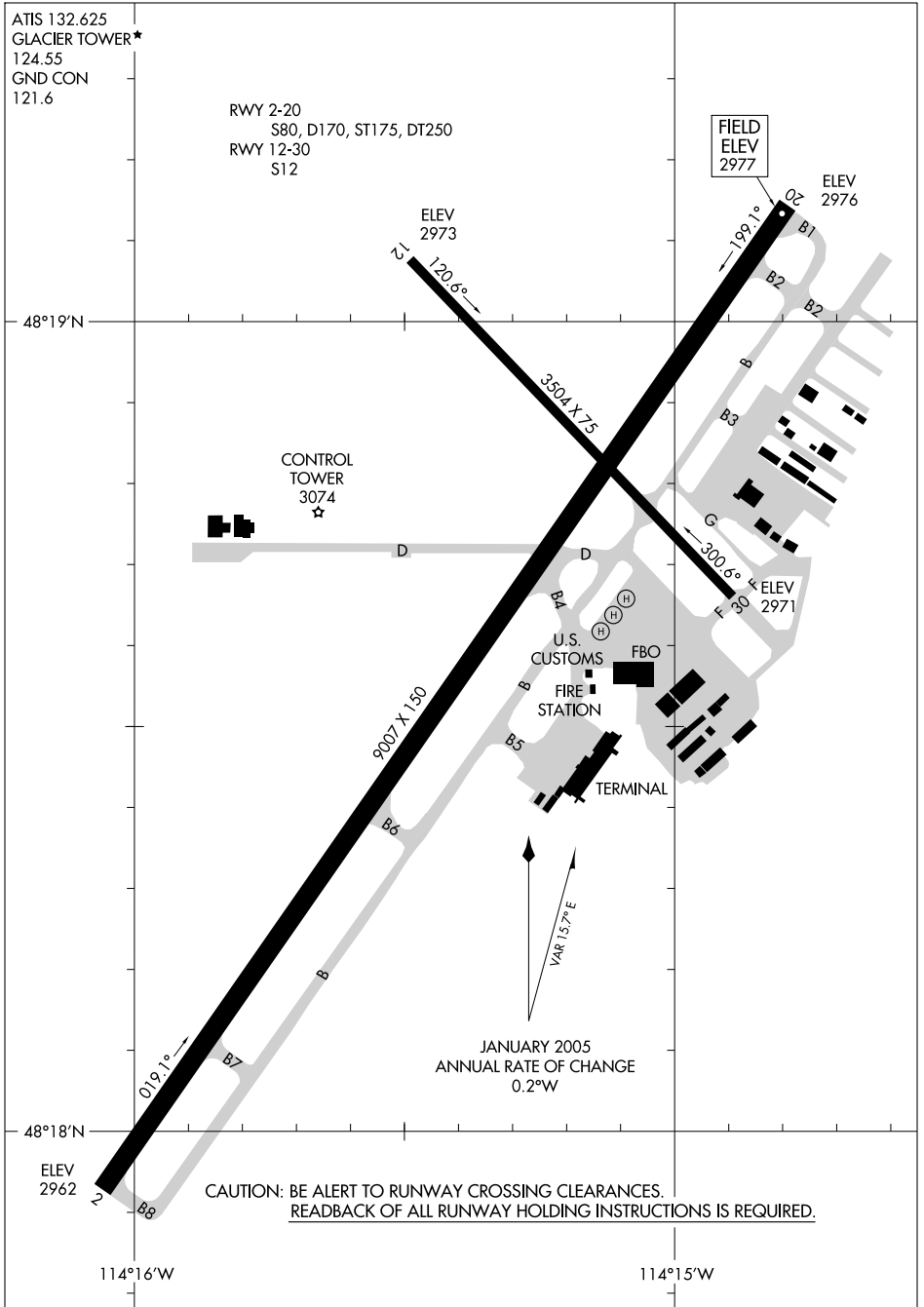
FIELD
ELEV
2977

ELEV
2976

48°19'N

NW-1, 30 AUG 2007 to 27 SEP 2007

NW-1, 30 AUG 2007 to 27 SEP 2007



48°18'N

ELEV
2962

CAUTION: BE ALERT TO RUNWAY CROSSING CLEARANCES.
READBACK OF ALL RUNWAY HOLDING INSTRUCTIONS IS REQUIRED.

114°16'W

114°15'W

AIRPORT DIAGRAM

07130

KALISPELL, MONTANA
KALISPELL/GLACIER PARK INTL (GPI)