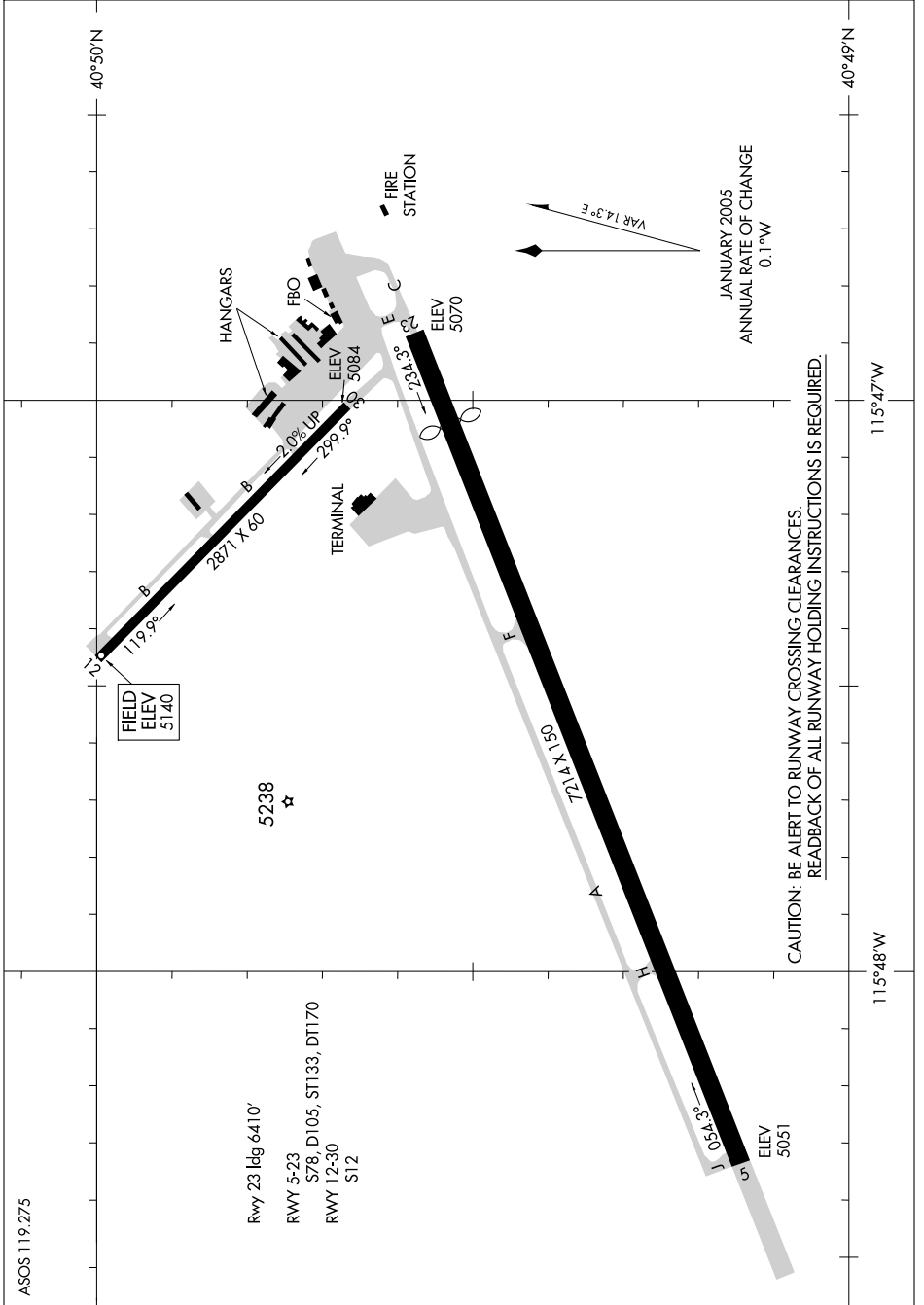


# AIRPORT DIAGRAM

AL-129 (FAA)

ELKO REGIONAL (EKO)  
ELKO, NEVADA

SW-4, 30 AUG 2007 to 27 SEP 2007



ASOS 119.275

Rwy 23 ldg 6410'

RWY 5-23  
S78, D105, ST133, DT170  
RWY 12-30  
S12

5238

HANGARS

FBO

TERMINAL

FIRE STATION

ELEV  
5070

ELEV  
5084

ELEV  
5051

JANUARY 2005  
ANNUAL RATE OF CHANGE  
0.1°W

CAUTION: BE ALERT TO RUNWAY CROSSING CLEARANCES.  
READBACK OF ALL RUNWAY HOLDING INSTRUCTIONS IS REQUIRED.

115°48'W

115°47'W

40°50'N

40°49'N

# AIRPORT DIAGRAM

ELKO, NEVADA  
ELKO REGIONAL (EKO)

SW-4, 30 AUG 2007 to 27 SEP 2007